

# HARCO PRICE LIST

## SDR-26 Gasketed Sewer Fittings

**Short Form Specifications** - PVC Sewer Fittings shall conform to the requirements of ASTM D3034 and ASTM F1336 with minimum wall thickness of SDR 26. Fittings in sizes 4" through 8" shall be Molded in one piece with elastomeric joints and minimum socket depths as specified in sections 6.2 and 7.3.2 of ASTM D3034. Fittings 10" and larger shall be Molded or fabricated in accordance with ASTM D3034 and ASTM F1336 with manufacturers' standard pipe bells and gaskets. Gaskets shall have a minimum cross sectional area of 0.20 sq. in. and conform to ASTM F477 specification. PVC material shall have a cell classification of 12454 or 13343 as defined in ASTM D1784.

### 45° WYE



(G x G x G)

SIZE	PART NUMBER	CTN QTY	WT EACH	STYLE	CAT	LIST PRICE
4	26-010404	12	2.4	M		\$112.73
6 x 4	26-010604	6	4.8	M		\$147.98
6	26-010606	4	6.8	M		\$183.02
8 x 4	26-010804	4	10	M		\$207.10
8 x 6	26-010806	4	12	M		\$237.74
8	26-010808	1	17	F		\$416.52
10 x 4	26-011004	1	21	A		\$524.14
10 x 6	26-011006	2	19	M		\$532.59
10 x 8	26-011008	1	23	FTO		\$822.92
10	26-011010	1	33	FTO		\$994.34
12 x 4	26-011204	1	29	A		\$716.04
12 x 6	26-011206	1	27	M		\$725.41
12 x 8	26-011208	1	36	FTO		\$1,078.53
12 x 10	26-011210	1	43	FTO		\$1,324.75
12	26-011212	1	56	FTO		\$1,408.73
15 x 4	26-011504	1	41	FTO		\$1,022.57
15 x 6	26-011506	1	46	FTO		\$1,224.99
15 x 8	26-011508	1	53	FTO		\$1,366.05
15 x 10	26-011510	1	64	FTO		\$1,641.75
15 x 12	26-011512	1	77	FTO		\$1,828.96
15	26-011515	1	88	FTO		\$2,309.34
18 x 4	26-011804	1	68	FTO		\$2,569.04
18 x 6	26-011806	1	79	FTO		\$2,602.37
18 x 8	26-011808	1	90	FTO		\$2,694.57
18 x 10	26-011810	1	98	FTO		\$3,027.29
18 x 12	26-011812	1	113	FTO		\$3,253.02
18 x 15	26-011815	1	133	FTO		\$3,481.05
18	26-011818	1	188	FTO		\$4,521.99
21 x 4	26-012104	1	109	FTO		\$4,462.22
21 x 6	26-012106	1	121	FTO		\$4,989.56
21 x 8	26-012108	1	132	FTO		\$5,394.21
21 x 10	26-012110	1	145	FTO		\$6,080.25
21 x 12	26-012112	1	167	FTO		\$6,575.76
21 x 15	26-012115	1	170	FTO		\$7,615.83
21 x 18	26-012118	1	240	FTO		\$8,968.51
21	26-012121	1	263	FTO		\$11,735.44

SIZE	PART NUMBER	CTN QTY	WT EACH	STYLE	CAT	LIST PRICE
24 x 4	26-012404	1	166	FTO		\$6,962.00
24 x 6	26-012406	1	178	FTO		\$8,442.04
24 x 8	26-012408	1	190	FTO		\$8,575.68
24 x 10	26-012410	1	224	FTO		\$8,954.61
24 x 12	26-012412	1	240	FTO		\$9,118.19
24 x 15	26-012415	1	270	FTO		\$9,475.60
24 x 18	26-012418	1	314	FTO		\$13,112.76
24 x 21	26-012421	1	356	FTO		\$14,186.10
24	26-012424	1	432	FTO		\$17,431.11

### REPLACEMENT GASKET FOR MOLDED FITTINGS



SIZE	PART NUMBER	CTN QTY	WT EACH	STYLE	CAT	LIST PRICE
4	35-9504	1	0.1	M		\$5.61
6	35-9506	1	0.2	M		\$7.76
8	35-9508	1	0.3	M		\$13.00
10	35-9510	1	0.7	M		\$122.53
12	35-9512	1	0.8	M		\$125.62

#### STYLE LEGEND:

A	Assembled from molded components (Stock)
F	Fabricated (Stock)
FTO	Fabricated To Order; Non-Returnable; Non-Cancelable; Non-Stock (2-4 day lead time)
M	Molded; Gray Color (Stock)
NOTE: Stock items are subject to prior sale	

NOTE: Category column intentionally left blank

# HARCO PRICE LIST

## SDR-26 Gasketed Sewer Fittings

### 45° WYE



(G x S x G)

SIZE	PART NUMBER	CTN QTY	WT EACH	STYLE	CAT	LIST PRICE
4	26-020404	1	3.1	A		\$138.73
6 x 4	26-020604	1	7.0	A		\$171.76
6	26-020606	1	8.1	A		\$175.22
8 x 4	26-020804	1	11	A		\$238.18
8 x 6	26-020806	1	12	A		\$273.41
8	26-020808	1	16	F		\$479.00
10 x 4	26-021004	1	28	A		\$602.75
10 x 6	26-021006	1	26	A		\$612.50
10 x 8	26-021008	1	27	FTO		\$949.51
10	26-021010	1	32	FTO		\$1,143.48
12 x 4	26-021204	1	38	A		\$823.50
12 x 6	26-021206	1	37	A		\$834.23
12 x 8	26-021208	1	35	FTO		\$1,240.32
12 x 10	26-021210	1	45	FTO		\$1,523.51
12	26-021212	1	51	FTO		\$1,617.74
15 x 4	26-021504	1	38	FTO		\$1,176.08
15 x 6	26-021506	1	54	FTO		\$1,408.76
15 x 8	26-021508	1	57	FTO		\$1,570.97
15 x 10	26-021510	1	63	FTO		\$1,888.07
15 x 12	26-021512	1	74	FTO		\$2,103.32
15	26-021515	1	85	FTO		\$2,655.76
18 x 4	26-021804	1	72	FTO		\$3,344.83
18 x 6	26-021806	1	81	FTO		\$3,458.33
18 x 8	26-021808	1	92	FTO		\$3,613.02
18 x 10	26-021810	1	97	FTO		\$3,751.98
18 x 12	26-021812	1	112	FTO		\$3,854.72
18 x 15	26-021815	1	130	FTO		\$4,105.19
18	26-021818	1	173	FTO		\$5,200.28

SIZE	PART NUMBER	CTN QTY	WT EACH	STYLE	CAT	LIST PRICE
21 x 4	26-022104	1	105	FTO		\$5,131.55
21 x 6	26-022106	1	116	FTO		\$5,967.53
21 x 8	26-022108	1	132	FTO		\$6,203.34
21 x 10	26-022110	1	151	FTO		\$6,992.28
21 x 12	26-022112	1	159	FTO		\$7,562.12
21 x 15	26-022115	1	177	FTO		\$8,758.20
21 x 18	26-022118	1	232	FTO		\$10,313.78
21	26-022121	1	296	FTO		\$13,495.76
24 x 4	26-022404	1	155	FTO		\$8,006.30
24 x 6	26-022406	1	159	FTO		\$9,708.35
24 x 8	26-022408	1	184	FTO		\$9,862.04
24 x 10	26-022410	1	201	FTO		\$10,297.80
24 x 12	26-022412	1	224	FTO		\$10,485.92
24 x 15	26-022415	1	246	FTO		\$10,896.93
24 x 18	26-022418	1	284	FTO		\$15,079.67
24 x 21	26-022421	1	304	FTO		\$16,314.02
24	26-022424	1	281	FTO		\$20,045.79

### 45° WYE - DWV Hub



(G x G x DWV Hub)

SIZE	PART NUMBER	CTN QTY	WT EACH	STYLE	CAT	LIST PRICE
8 x 4	26-630804	4	11	M		\$184.61

#### STYLE LEGEND:

A	Assembled from molded components (Stock)
F	Fabricated (Stock)
FTO	Fabricated To Order; Non-Returnable; Non-Cancelable; Non-Stock (2-4 day lead time)
M	Molded; Gray Color (Stock)
NOTE: Stock items are subject to prior sale	

NOTE: Category column intentionally left blank

# HARCO PRICE LIST

## SDR-26 Gasketed Sewer Fittings

### TEE - WYE



(G x G x G)

SIZE	PART NUMBER	CTN QTY	WT EACH	STYLE	CAT	LIST PRICE
4	26-050404	1	3.9	A		\$136.54
6 x 4	26-050604	1	6.3	A		\$160.48
6	26-050606	1	10	A		\$210.43
8 x 4	26-050804	3	10	M		\$202.77
8 x 6	26-050806	3	11	M		\$231.81
8	26-050808	1	12	F		\$521.66
10 x 4	26-051004	1	19	A		\$599.00
10 x 6	26-051006	2	17	M		\$672.88
10 x 8	26-051008	1	28	FTO		\$1,042.42
10	26-051010	1	46	FTO		\$1,290.49
12 x 4	26-051204	1	26	A		\$746.93
12 x 6	26-051206	1	24	M		\$813.36
12 x 8	26-051208	1	39	FTO		\$1,138.96
12 x 10	26-051210	1	30	FTO		\$1,577.16
12	26-051212	1	63	FTO		\$1,792.72
15 x 4	26-051504	1	40	FTO		\$1,176.85
15 x 6	26-051506	1	48	FTO		\$1,280.02
15 x 8	26-051508	1	54	FTO		\$1,372.55
15 x 10	26-051510	1	46	FTO		\$2,209.09
15 x 12	26-051512	1	46	FTO		\$2,595.37
15	26-051515	1	46	FTO		\$3,384.94
18 x 4	26-051804	1	68	FTO		\$2,919.84
18 x 6	26-051806	1	76	FTO		\$2,972.97
18 x 8	26-051808	1	91	FTO		\$3,153.44
18 x 10	26-051810	1	103	FTO		\$4,418.05
18 x 12	26-051812	1	128	FTO		\$4,535.66
18 x 15	26-051815	1	154	FTO		\$4,837.99
18	26-051818	1	189	FTO		\$5,106.82
21 x 4	26-052104	1	108	FTO		\$4,707.64
21 x 6	26-052106	1	120	FTO		\$5,474.57
21 x 8	26-052108	1	136	FTO		\$5,902.62
21 x 10	26-052110	1	149	FTO		\$6,562.68
21 x 12	26-052112	1	176	FTO		\$7,018.35
21 x 15	26-052115	1	216	FTO		\$8,034.69
21 x 18	26-052118	1	265	FTO		\$9,461.77
21	26-052121	1	296	FTO		\$12,380.88

SIZE	PART NUMBER	CTN QTY	WT EACH	STYLE	CAT	LIST PRICE
24 x 4	26-052404	1	173	FTO		\$7,428.57
24 x 6	26-052406	1	180	FTO		\$8,552.85
24 x 8	26-052408	1	200	FTO		\$9,047.35
24 x 10	26-052410	1	180	FTO		\$9,447.11
24 x 12	26-052412	1	177	FTO		\$9,619.70
24 x 15	26-052415	1	181	FTO		\$9,885.84
24 x 18	26-052418	1	180	FTO		\$13,833.96
24 x 21	26-052421	1	182	FTO		\$15,791.70
24	26-052424	1	185	FTO		\$18,389.83

#### STYLE LEGEND:

A	Assembled from molded components (Stock)
F	Fabricated (Stock)
FTO	Fabricated To Order; Non-Returnable; Non-Cancelable; Non-Stock (2-4 day lead time)
M	Molded; Gray Color (Stock)
NOTE: Stock items are subject to prior sale	

NOTE: Category column intentionally left blank

# HARCO PRICE LIST

## SDR-26 Gasketed Sewer Fittings



### TEE - WYE

(G x S x G)

SIZE	PART NUMBER	CTN QTY	WT EACH	STYLE	CAT	LIST PRICE
4	26-060404	1	3.1	A		\$143.37
6 x 4	26-060604	1	7.0	A		\$160.63
4	26-060606	1	8.1	A		\$210.43
8 x 4	26-060804	1	10	A		\$192.54
8 x 6	26-060806	1	9.9	A		\$220.31
8	26-060808	1	14	FTO		\$548.38
10 x 4	26-061004	1	26	A		\$1,120.17
10 x 6	26-061006	1	25	A		\$773.82
10 x 8	26-061008	1	27	FTO		\$1,198.78
10	26-061010	1	34	FTO		\$1,986.46
12 x 4	26-061204	1	36	A		\$868.80
12 x 6	26-061206	1	35	A		\$813.33
12 x 8	26-061208	1	38	FTO		\$1,585.94
12 x 10	26-061210	1	46	FTO		\$2,459.44
12	26-061212	1	55	FTO		\$2,786.20
15 x 4	26-061504	1	39	FTO		\$1,353.40
15 x 6	26-061506	1	45	FTO		\$1,486.23
15 x 8	26-061508	1	57	FTO		\$1,657.37
15 x 10	26-061510	1	45	FTO		\$2,540.45
15 x 12	26-061512	1	45	FTO		\$2,984.69
15	26-061515	1	45	FTO		\$3,892.68
18 x 4	26-061804	1	70	FTO		\$3,528.80
18 x 6	26-061806	1	77	FTO		\$3,648.53
18 x 8	26-061808	1	88	FTO		\$3,811.75
18 x 10	26-061810	1	101	FTO		\$5,080.76
18 x 12	26-061812	1	127	FTO		\$5,216.01
18 x 15	26-061815	1	153	FTO		\$5,563.70
18	26-061818	1	188	FTO		\$4,852.58
21 x 4	26-062104	1	100	FTO		\$5,413.78
21 x 6	26-062106	1	111	FTO		\$6,295.75
21 x 8	26-062108	1	131	FTO		\$6,788.01
21 x 10	26-062110	1	147	FTO		\$7,547.08
21 x 12	26-062112	1	174	FTO		\$8,071.10
21 x 15	26-062115	1	215	FTO		\$9,239.89
21 x 18	26-062118	1	263	FTO		\$10,881.04
21	26-062121	1	294	FTO		\$14,238.01

SIZE	PART NUMBER	CTN QTY	WT EACH	STYLE	CAT	LIST PRICE
24 x 4	26-062404	1	146	FTO		\$8,542.86
24 x 6	26-062406	1	155	FTO		\$10,242.30
24 x 8	26-062408	1	174	FTO		\$10,404.46
24 x 10	26-062410	1	178	FTO		\$10,864.17
24 x 12	26-062412	1	176	FTO		\$11,062.66
24 x 15	26-062415	1	180	FTO		\$11,496.26
24 x 18	26-062418	1	178	FTO		\$15,909.05
24 x 21	26-062421	1	184	FTO		\$18,160.46
24	26-062424	1	231	FTO		\$21,148.30

#### STYLE LEGEND:

A	Assembled from molded components (Stock)
FTO	Fabricated To Order; Non-Returnable; Non-Cancelable; Non-Stock (2-4 day lead time)
NOTE: Stock items are subject to prior sale	

NOTE: Category column intentionally left blank

# HARCO PRICE LIST

## SDR-26 Gasketed Sewer Fittings

### TEE



(G x G x G)

SIZE	PART NUMBER	CTN QTY	WT EACH	STYLE	CAT	LIST PRICE
4	26-120404	1	4.0	F		\$117.69
6 x 4	26-120604	1	7.0	F		\$165.27
6	26-120606	1	1.0	F		\$161.08
8 x 4	26-120804	4	8.8	M		\$202.77
8 x 6	26-120806	3	9.8	M		\$226.18
8	26-120808	1	14	F		\$334.68
10 x 4	26-121004	1	17	F		\$507.77
10 x 6	26-121006	1	17	FTO		\$517.60
10 x 8	26-121008	1	22	FTO		\$786.35
10	26-121010	1	14	FTO		\$857.13
12 x 4	26-121204	1	27	FTO		\$647.99
12 x 6	26-121206	1	28	FTO		\$678.65
12 x 8	26-121208	1	31	FTO		\$921.28
12 x 10	26-121210	1	37	FTO		\$1,100.27
12	26-121212	1	42	FTO		\$1,187.70
15 x 4	26-121504	1	40	FTO		\$962.55
15 x 6	26-121506	1	42	FTO		\$1,060.78
15 x 8	26-121508	1	46	FTO		\$1,117.05
15 x 10	26-121510	1	53	FTO		\$1,273.35
15 x 12	26-121512	1	57	FTO		\$1,500.05
15	26-121515	1	73	FTO		\$1,948.92
18 x 4	26-121804	1	65	FTO		\$2,770.04
18 x 6	26-121806	1	67	FTO		\$2,864.02
18 x 8	26-121808	1	73	FTO		\$2,992.12
18 x 10	26-121810	1	80	FTO		\$3,107.19
18 x 12	26-121812	1	95	FTO		\$3,192.32
18 x 15	26-121815	1	109	FTO		\$3,399.75
18	26-121818	1	131	FTO		\$3,590.12
21 x 4	26-122104	1	110	FTO		\$4,202.13
21 x 6	26-122106	1	114	FTO		\$4,507.69
21 x 8	26-122108	1	120	FTO		\$4,842.04
21 x 10	26-122110	1	134	FTO		\$5,202.72
21 x 12	26-122112	1	134	FTO		\$5,576.57
21 x 15	26-122115	1	158	FTO		\$6,224.24
21 x 18	26-122118	1	179	FTO		\$7,062.91
21	26-122121	1	210	FTO		\$9,361.91

SIZE	PART NUMBER	CTN QTY	WT EACH	STYLE	CAT	LIST PRICE
24 x 4	26-122404	1	163	FTO		\$6,630.48
24 x 6	26-122406	1	170	FTO		\$8,040.04
24 x 8	26-122408	1	178	FTO		\$8,167.31
24 x 10	26-122410	1	180	FTO		\$8,528.19
24 x 12	26-122412	1	189	FTO		\$8,684.00
24 x 15	26-122415	1	226	FTO		\$9,024.38
24 x 18	26-122418	1	238	FTO		\$12,488.34
24 x 21	26-122421	1	265	FTO		\$13,510.57
24	26-122424	1	316	FTO		\$16,601.07

### TEE - DWV Hub



(G x G x DWV Hub)

SIZE	PART NUMBER	CTN QTY	WT EACH	STYLE	CAT	LIST PRICE
8 x 4	26-650804	4	11	M		\$213.22

#### STYLE LEGEND:

F	Fabricated (Stock)
FTO	Fabricated To Order; Non-Returnable; Non-Cancelable; Non-Stock (2-4 day lead time)
M	Molded; Gray Color (Stock)
NOTE: Stock items are subject to prior sale	

NOTE: Category column intentionally left blank

# HARCO PRICE LIST

## SDR-26 Gasketed Sewer Fittings



### TEE

(G x S x G)

SIZE	PART NUMBER	CTN QTY	WT EACH	STYLE	CAT	LIST PRICE
4	26-110404	1	4.0	FTO		\$155.69
6 x 4	26-110604	1	7.0	FTO		\$155.70
6	26-110606	1	7.0	FTO		\$169.26
8 x 4	26-110804	1	7.3	A		\$289.78
8 x 6	26-110806	1	8.3	A		\$339.24
8	26-110808	1	13	FTO		\$360.04
10 x 4	26-111004	1	16	FTO		\$507.77
10 x 6	26-111006	1	16	FTO		\$517.60
10 x 8	26-111008	1	21	FTO		\$786.36
10	26-111010	1	13	FTO		\$857.14
12 x 4	26-111204	1	26	FTO		\$648.01
12 x 6	26-111206	1	27	FTO		\$678.65
12 x 8	26-111208	1	30	FTO		\$921.28
12 x 10	26-111210	1	36	FTO		\$1,100.38
12	26-111212	1	41	FTO		\$1,187.72
15 x 4	26-111504	1	39	FTO		\$962.62
15 x 6	26-111506	1	41	FTO		\$1,060.78
15 x 8	26-111508	1	45	FTO		\$1,117.05
15 x 10	26-111510	1	52	FTO		\$1,273.37
15 x 12	26-111512	1	56	FTO		\$1,500.51
15	26-111515	1	72	FTO		\$1,948.99
18 x 4	26-111804	1	63	FTO		\$2,770.04
18 x 6	26-111806	1	66	FTO		\$2,864.03
18 x 8	26-111808	1	71	FTO		\$2,992.19
18 x 10	26-111810	1	79	FTO		\$3,107.24
18 x 12	26-111812	1	93	FTO		\$3,192.32
18 x 15	26-111815	1	107	FTO		\$3,399.76
18	26-111818	1	130	FTO		\$3,590.22
21 x 4	26-112104	1	109	FTO		\$4,202.13
21 x 6	26-112106	1	112	FTO		\$4,507.69
21 x 8	26-112108	1	119	FTO		\$4,842.04
21 x 10	26-112110	1	132	FTO		\$5,202.72
21 x 12	26-112112	1	132	FTO		\$5,576.57
21 x 15	26-112115	1	156	FTO		\$6,224.24
21 x 18	26-112118	1	177	FTO		\$7,062.92
21	26-112121	1	208	FTO		\$9,361.91

SIZE	PART NUMBER	CTN QTY	WT EACH	STYLE	CAT	LIST PRICE
24 x 4	26-112404	1	161	FTO		\$6,630.49
24 x 6	26-112406	1	169	FTO		\$8,040.04
24 x 8	26-112408	1	177	FTO		\$8,167.31
24 x 10	26-112410	1	178	FTO		\$8,528.19
24 x 12	26-112412	1	188	FTO		\$8,684.00
24 x 15	26-112415	1	224	FTO		\$9,024.38
24 x 18	26-112418	1	237	FTO		\$12,488.34
24 x 21	26-112421	1	264	FTO		\$13,510.57
24	26-112424	1	315	FTO		\$16,601.07

#### STYLE LEGEND:

A	Assembled from molded components (Stock)
FTO	Fabricated To Order; Non-Returnable; Non-Cancelable; Non-Stock (2-4 day lead time)
NOTE: Stock items are subject to prior sale	

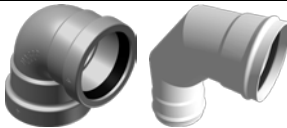
NOTE: Category column intentionally left blank

# HARCO PRICE LIST

## SDR-26 Gasketed Sewer Fittings

**90° BEND**

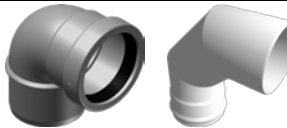
(G x G)



SIZE	PART NUMBER	CTN QTY	WT EACH	STYLE	CAT	LIST PRICE
4	26-1804	1	4.9	F		\$88.48
6	26-1806	12	4.2	M		\$97.09
8	26-1808	4	8.8	M		\$412.98
10	26-1810	1	25	F		\$701.93
12	26-1812	1	41	F		\$927.42
15	26-1815	1	65	FTO		\$1,712.88
18	26-1818	1	137	FTO		\$3,228.79
21	26-1821	1	224	FTO		\$5,980.32
24	26-1824	1	323	FTO		\$7,996.08

**90° BEND**

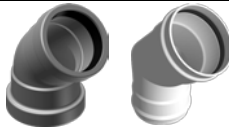
(G x S)



SIZE	PART NUMBER	CTN QTY	WT EACH	STYLE	CAT	LIST PRICE
4	26-1904	1	5.0	F		\$111.67
6	26-1906	12	3.6	M		\$92.18
8	26-1908	4	8.8	M		\$412.98
10	26-1910	1	17	FTO		\$701.93
12	26-1912	1	19	FTO		\$927.42
15	26-1915	1	65	FTO		\$1,712.88
18	26-1918	1	138	FTO		\$2,984.28
21	26-1921	1	211	FTO		\$5,406.98
24	26-1924	1	316	FTO		\$6,676.33

**45° BEND**

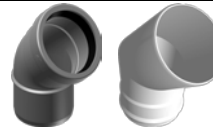
(G x G)



SIZE	PART NUMBER	CTN QTY	WT EACH	STYLE	CAT	LIST PRICE
4	26-2204	24	1.4	M		\$49.79
6	26-2206	12	3.4	M		\$91.42
8	26-2208	4	8.3	M		\$225.42
10	26-2210	1	21	F		\$447.72
12	26-2212	1	28	F		\$695.43
15	26-2215	1	48	FTO		\$1,395.96
18	26-2218	1	92	FTO		\$2,489.68
21	26-2221	1	158	FTO		\$4,546.90
24	26-2224	1	227	FTO		\$6,207.60

**45° BEND**

(G x S)



SIZE	PART NUMBER	CTN QTY	WT EACH	STYLE	CAT	LIST PRICE
4	26-2304	24	1.0	M		\$45.98
6	26-2306	12	2.8	M		\$67.53
8	26-2308	4	7.3	M		\$225.89
10	26-2310	1	18	F		\$447.72
12	26-2312	1	17	F		\$695.41
15	26-2315	1	25	FTO		\$1,395.96
18	26-2318	1	91	FTO		\$2,051.67
21	26-2321	1	141	FTO		\$4,546.90
24	26-2324	1	207	FTO		\$6,207.60

**STYLE LEGEND:**

F	Fabricated (Stock)
FTO	Fabricated To Order; Non-Returnable; Non-Cancelable; Non-Stock (2-4 day lead time)
M	Molded; Gray Color (Stock)
NOTE: Stock items are subject to prior sale	

NOTE: Category column intentionally left blank

## HARCO PRICE LIST

### SDR-26 Gasketed Sewer Fittings

<b>22½° BEND</b>						
<b>(G x G)</b>						
SIZE	PART NUMBER	CTN QTY	WT EACH	STYLE	CAT	LIST PRICE
4	26-2404	24	1.4	M		\$66.10
6	26-2406	12	3.2	M		\$124.62
8	26-2408	1	9.0	F		\$221.49
10	26-2410	1	17	FTO		\$490.97
12	26-2412	1	28	FTO		\$659.82
15	26-2415	1	49	FTO		\$1,575.75
18	26-2418	1	93	FTO		\$2,566.44
21	26-2421	1	139	FTO		\$3,927.20
24	26-2424	1	220	FTO		\$5,654.72



<b>22½° BEND</b>						
<b>(G x S)</b>						
SIZE	PART NUMBER	CTN QTY	WT EACH	STYLE	CAT	LIST PRICE
4	26-2504	24	1.0	M		\$63.28
6	26-2506	12	2.1	M		\$119.37
8	26-2508	4	11.0	FTO		\$221.49
10	26-2510	1	18	FTO		\$490.97
12	26-2512	1	25	FTO		\$659.82
15	26-2515	1	38	FTO		\$1,575.75
18	26-2518	1	86	FTO		\$2,566.44
21	26-2521	1	131	FTO		\$3,927.20
24	26-2524	1	189	FTO		\$5,654.63



<b>11¼° BEND</b>						
<b>(G x G)</b>						
SIZE	PART NUMBER	CTN QTY	WT EACH	STYLE	CAT	LIST PRICE
4	26-2804	1	1.3	FTO		\$70.35
6	26-2806	1	3.5	FTO		\$124.63
8	26-2808	1	6.6	FTO		\$234.80
10	26-2810	1	12	FTO		\$490.98
12	26-2812	1	17	FTO		\$659.82
15	26-2815	1	40	FTO		\$1,575.79
18	26-2818	1	87	FTO		\$2,566.44
21	26-2821	1	130	FTO		\$3,927.20
24	26-2824	1	211	FTO		\$5,654.72



<b>11¼° BEND</b>						
<b>(G x S)</b>						
SIZE	PART NUMBER	CTN QTY	WT EACH	STYLE	CAT	LIST PRICE
4	26-2904	1	1.1	FTO		\$113.46
6	26-2906	1	2.9	FTO		\$92.18
8	26-2908	1	6.0	FTO		\$234.80
10	26-2910	1	10	FTO		\$490.98
12	26-2912	1	23	FTO		\$659.82
15	26-2915	1	38	FTO		\$1,575.79
18	26-2918	1	82	FTO		\$2,566.44
21	26-2921	1	120	FTO		\$3,927.20
24	26-2924	1	174	FTO		\$5,654.63



<b>STYLE LEGEND:</b>	
F	Fabricated (Stock)
FTO	Fabricated To Order; Non-Returnable; Non-Cancelable; Non-Stock (2-4 day lead time)
M	Molded; Gray Color (Stock)
NOTE: Stock items are subject to prior sale	

NOTE: Category column intentionally left blank



# HARCO PRICE LIST

## SDR-26 Gasketed Sewer Fittings

### COUPLING



With Stop (G x G)

SIZE	PART NUMBER	CTN QTY	WT EACH	STYLE	CAT	LIST PRICE
4	26-0804	36	3.4	M		\$54.89
6	26-0806	18	7.6	M		\$155.14
8	26-0808	12	5.8	M		\$185.79
10	26-0810	1	11	FTO		\$276.20
12	26-0812	1	17	FTO		\$401.02
15	26-0815	1	32	FTO		\$829.70
18	26-0818	1	49	FTO		\$1,765.95
21	26-0821	1	89	FTO		\$3,245.55
24	26-0824	1	142	FTO		\$4,728.25

### REPAIR COUPLING



No Stop (G x G)

SIZE	PART NUMBER	CTN QTY	WT EACH	STYLE	CAT	LIST PRICE
4	26-0904	36	3.4	M		\$51.98
6	26-0906	18	2.0	M		\$109.94
8	26-0908	12	4.4	M		\$180.58
10	26-0910	1	12	F		\$276.21
12	26-0912	1	15	F		\$401.05
15	26-0915	1	21	FTO		\$829.70
18	26-0918	1	39	FTO		\$1,765.95
21	26-0921	1	56	FTO		\$3,245.55
24	26-0924	1	72	FTO		\$4,728.25

#### STYLE LEGEND:

F	Fabricated (Stock)
FTO	Fabricated To Order; Non-Returnable; Non-Cancelable; Non-Stock (2-4 day lead time)
M	Molded; Gray Color (Stock)
NOTE: Stock items are subject to prior sale	

NOTE: Category column intentionally left blank

# HARCO PRICE LIST

## SDR-26 Gasketed Sewer Fittings

### MANHOLE ADAPTER

Double Bell  
(G x G)

Sand Coating on Exterior



SIZE	PART NUMBER	CTN QTY	WT EACH	STYLE	CAT	LIST PRICE
4	26-5704	1	4.4	FTO		\$89.07
6	26-5706	1	3.0	FTO		\$168.09
8	26-5708	1	5.4	FTO		\$186.49
10	26-5710	1	13	FTO		\$340.38
12	26-5712	1	16	FTO		\$498.82
15	26-5715	1	23	FTO		\$639.06
18	26-5718	1	41	FTO		\$1,383.32
21	26-5721	1	58	FTO		\$2,179.59
24	26-5724	1	74	FTO		\$3,629.65

### MANHOLE ADAPTER

Single Bell  
(G)

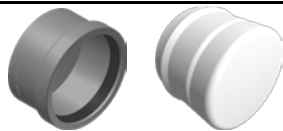
Sand Coating on Exterior



SIZE	PART NUMBER	CTN QTY	WT EACH	STYLE	CAT	LIST PRICE
4	26-5804	1	1.2	FTO		\$57.50
6	26-5806	1	2.1	FTO		\$132.33
8	26-5808	1	3.6	FTO		\$135.21
10	26-5810	1	5.8	FTO		\$295.10
12	26-5812	1	11	FTO		\$324.68
15	26-5815	1	16	FTO		\$415.43
18	26-5818	1	23	FTO		\$901.21
21	26-5821	1	43	FTO		\$1,419.96
24	26-5824	1	54	FTO		\$2,364.65

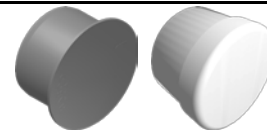
### CAP

(G)



SIZE	PART NUMBER	CTN QTY	WT EACH	STYLE	CAT	LIST PRICE
4	26-4904	24	0.9	M		\$45.08
6	26-4906	24	1.9	M		\$104.13
8	26-4908	1	5.0	FTO		\$154.16
10	26-4910	1	11	FTO		\$297.45
12	26-4912	1	18	FTO		\$467.92
15	26-4915	1	27	FTO		\$778.39
18	26-4918	1	44	FTO		\$1,170.98
21	26-4921	1	80	FTO		\$2,738.78
24	26-4924	1	127	FTO		\$3,163.21

### PERMANENT PLUG



SIZE	PART NUMBER	CTN QTY	WT EACH	STYLE	CAT	LIST PRICE
4	26-4404	24	0.6	M		\$40.27
6	26-4406	24	1.7	M		\$81.17
8	26-4408	12	3.3	M		\$143.44
10	26-4410	1	9.0	FTO		\$275.71
12	26-4412	1	15	FTO		\$343.32
15	26-4415	1	25	FTO		\$604.66
18	26-4418	1	42	FTO		\$948.70
21	26-4421	1	74	FTO		\$2,023.34
24	26-4424	1	97	FTO		\$3,042.33

#### STYLE LEGEND:

FTO	Fabricated To Order; Non-Returnable; Non-Cancelable; Non-Stock (2-4 day lead time)
M	Molded; Gray Color (Stock)
NOTE: Stock items are subject to prior sale	

NOTE: Category column intentionally left blank

# HARCO PRICE LIST

## SDR-26 Gasketed Sewer Fittings

### DOUBLE WYE



(G x G x G x G)

SIZE	PART NUMBER	CTN QTY	WT EACH	STYLE	CAT	LIST PRICE	SIZE	PART NUMBER	CTN QTY	WT EACH	STYLE	CAT	LIST PRICE
4	26-040404	1	4.7	FTO		\$183.74	24 x 4	26-042404	1	174	FTO		\$9,050.60
6 x 4	26-040604	4	5.3	M		\$244.01	24 x 6	26-042406	1	186	FTO		\$11,396.75
6	26-040606	2	12	M		\$332.47	24 x 8	26-042408	1	197	FTO		\$12,005.95
8 x 4	26-040804	1	13	FTO		\$351.53	24 x 10	26-042410	1	163	FTO		\$13,431.91
8 x 6	26-040806	1	16	FTO		\$420.67	24 x 12	26-042412	1	163	FTO		\$14,133.20
8	26-040808	1	26	FTO		\$671.36	24 x 15	26-042415	1	165	FTO		\$15,160.96
10 x 4	26-041004	1	20	FTO		\$872.16	24 x 18	26-042418	1	170	FTO		\$21,636.04
10 x 6	26-041006	1	26	FTO		\$916.99	24 x 21	26-042421	1	171	FTO		\$24,116.36
10 x 8	26-041008	1	34	FTO		\$1,294.25	24	26-042424	1	162	FTO		\$30,504.45
10	26-041010	1	44	FTO		\$1,464.99							
12 x 4	26-041204	1	26	FTO		\$1,105.12							
12 x 6	26-041206	1	34	FTO		\$1,175.07							
12 x 8	26-041208	1	41	FTO		\$1,586.09							
12 x 10	26-041210	1	54	FTO		\$1,832.93							
12	26-041212	1	71	FTO		\$1,985.62							
15 x 4	26-041504	1	41	FTO		\$1,594.46							
15 x 6	26-041506	1	48	FTO		\$1,817.76							
15 x 8	26-041508	1	60	FTO		\$1,947.57							
15 x 10	26-041510	1	78	FTO		\$2,267.52							
15 x 12	26-041512	1	95	FTO		\$2,840.73							
15	26-041515	1	12	FTO		\$3,152.66							
18 x 4	26-041804	1	69	FTO		\$3,321.64							
18 x 6	26-041806	1	81	FTO		\$3,486.73							
18 x 8	26-041808	1	93	FTO		\$3,810.80							
18 x 10	26-041810	1	101	FTO		\$4,893.90							
18 x 12	26-041812	1	97	FTO		\$5,195.49							
18 x 15	26-041815	1	99	FTO		\$5,711.59							
18	26-041818	1	96	FTO		\$7,461.28							
21 x 4	26-042104	1	118	FTO		\$5,800.88							
21 x 6	26-042106	1	128	FTO		\$7,005.37							
21 x 8	26-042108	1	137	FTO		\$7,551.89							
21 x 10	26-042110	1	119	FTO		\$9,120.37							
21 x 12	26-042112	1	120	FTO		\$10,192.43							
21 x 15	26-042115	1	123	FTO		\$12,185.33							
21 x 18	26-042118	1	123	FTO		\$14,798.04							
21	26-042121	1	122	FTO		\$19,950.25							

STYLE LEGEND:	
FTO	Fabricated To Order; Non-Returnable; Non-Cancelable; Non-Stock (2-4 day lead time)
M	Molded; Gray Color (Stock)
	NOTE: Stock items are subject to prior sale

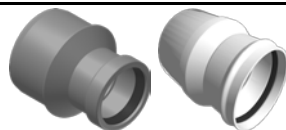
NOTE: Category column intentionally left blank

# HARCO PRICE LIST

## SDR-26 Gasketed Sewer Fittings

### CONCENTRIC INCREASER

(G x S)



SIZE	PART NUMBER	CTN QTY	WT EACH	STYLE	CAT	LIST PRICE
4 x 6	26-160406	12	2.6	M		\$94.42
4 x 8	26-160408	1	7.3	FTO		\$180.58
4 x 10	26-160410	1	11.0	FTO		\$377.74
4 x 12	26-160412	1	16	FTO		\$572.04
4 x 15	26-160415	1	26	FTO		\$960.83
4 x 18	26-160418	1	44	FTO		\$1,186.88
4 x 21	26-160421	1	89	FTO		\$1,640.79
4 x 24	26-160424	1	128	FTO		\$3,640.95
6 x 8	26-160608	1	8.3	FTO		\$189.43
6 x 10	26-160610	1	12	FTO		\$447.72
6 x 12	26-160612	1	18	FTO		\$601.34
6 x 15	26-160615	1	29	FTO		\$974.91
6 x 18	26-160618	1	45	FTO		\$1,314.54
6 x 21	26-160621	1	82	FTO		\$1,795.76
6 x 24	26-160624	1	128	FTO		\$3,684.14
8 x 10	26-160810	1	12	FTO		\$519.36
8 x 12	26-160812	1	18	FTO		\$692.71
8 x 15	26-160815	1	28	FTO		\$1,057.14
8 x 18	26-160818	1	32	FTO		\$1,346.49
8 x 21	26-160821	1	91	FTO		\$1,806.57
8 x 24	26-160824	1	136	FTO		\$3,867.00
10 x 12	26-161012	1	20	FTO		\$802.87
10 x 15	26-161015	1	31	FTO		\$1,165.12
10 x 18	26-161018	1	49	FTO		\$1,365.49
10 x 21	26-161021	1	91	FTO		\$1,828.03
10 x 24	26-161024	1	131	FTO		\$3,817.21
12 x 15	26-161215	1	31	FTO		\$1,266.97
12 x 18	26-161218	1	53	FTO		\$1,384.74
12 x 21	26-161221	1	95	FTO		\$1,871.76
12 x 24	26-161224	1	141	FTO		\$3,866.75
15 x 18	26-161518	1	61	FTO		\$1,396.18
15 x 21	26-161521	1	104	FTO		\$1,943.89
15 x 24	26-161524	1	146	FTO		\$3,976.85
18 x 21	26-161821	1	116	FTO		\$2,107.77
18 x 24	26-161824	1	146	FTO		\$4,150.55
21 x 24	26-162124	1	189	FTO		\$4,878.44

### CONCENTRIC INCREASER COUPLING

(G x G)



SIZE	PART NUMBER	CTN QTY	WT EACH	STYLE	CAT	LIST PRICE
4 x 6	26-170406	1	4.6	A		\$104.48
4 x 8	26-170408	1	10	FTO		\$182.92
4 x 10	26-170410	1	14	FTO		\$377.89
4 x 12	26-170412	1	20	FTO		\$572.04
4 x 15	26-170415	1	29	FTO		\$960.83
4 x 18	26-170418	1	45	FTO		\$1,237.20
4 x 21	26-170421	1	82	FTO		\$1,640.80
4 x 24	26-170424	1	134	FTO		\$3,640.96
6 x 8	26-170608	1	14	A		\$214.07
6 x 10	26-170610	1	14	FTO		\$447.72
6 x 12	26-170612	1	20	FTO		\$601.31
6 x 15	26-170615	1	32	FTO		\$974.88
6 x 18	26-170618	1	47	FTO		\$1,292.37
6 x 21	26-170621	1	87	FTO		\$1,795.74
6 x 24	26-170624	1	135	FTO		\$3,684.12
8 x 10	26-170810	1	8.4	FTO		\$519.36
8 x 12	26-170812	1	24	FTO		\$692.71
8 x 15	26-170815	1	33	FTO		\$1,057.10
8 x 18	26-170818	1	48	FTO		\$1,311.41
8 x 21	26-170821	1	92	FTO		\$1,806.57
8 x 24	26-170824	1	128	FTO		\$3,867.01
10 x 12	26-171012	1	13	FTO		\$802.87
10 x 15	26-171015	1	35	FTO		\$1,165.14
10 x 18	26-171018	1	51	FTO		\$1,519.48
10 x 21	26-171021	1	94	FTO		\$1,828.03
10 x 24	26-171024	1	143	FTO		\$3,817.23
12 x 15	26-171215	1	18	FTO		\$1,266.95
12 x 18	26-171218	1	53	FTO		\$1,384.74
12 x 21	26-171221	1	93	FTO		\$1,871.74
12 x 24	26-171224	1	146	FTO		\$3,866.73
15 x 18	26-171518	1	64	FTO		\$1,396.19
15 x 21	26-171521	1	103	FTO		\$1,943.91
15 x 24	26-171524	1	153	FTO		\$3,976.86
18 x 21	26-171821	1	117	FTO		\$2,107.80
18 x 24	26-171824	1	153	FTO		\$4,150.54
21 x 24	26-172124	1	189	FTO		\$4,878.42

#### STYLE LEGEND:

A	Assembled from molded components (Stock)
FTO	Fabricated To Order; Non-Returnable; Non-Cancelable; Non-Stock (2-4 day lead time)
M	Molded; Gray Color (Stock)
NOTE: Stock items are subject to prior sale	

NOTE: Category column intentionally left blank

# HARCO PRICE LIST

## SDR-26 Gasketed Sewer Fittings

### ECENTRIC INCREASER

(G x S)



SIZE	PART NUMBER	CTN QTY	WT EACH	STYLE	CAT	LIST PRICE
4 x 6	26-150406	1	19	FTO		\$97.37
4 x 8	26-150408	1	27	FTO		\$181.16
4 x 10	26-150410	1	13	FTO		\$377.74
4 x 12	26-150412	1	16	FTO		\$572.04
4 x 15	26-150415	1	26	FTO		\$960.83
4 x 18	26-150418	1	44	FTO		\$1,186.88
4 x 21	26-150421	1	74	FTO		\$1,640.79
4 x 24	26-150424	1	101	FTO		\$3,640.95
6 x 8	26-150608	1	21	FTO		\$190.15
6 x 10	26-150610	1	13	FTO		\$447.72
6 x 12	26-150612	1	19	FTO		\$601.31
6 x 15	26-150615	1	28	FTO		\$974.88
6 x 18	26-150618	1	43	FTO		\$1,314.52
6 x 21	26-150621	1	78	FTO		\$1,795.74
6 x 24	26-150624	1	106	FTO		\$3,684.12
8 x 10	26-150810	1	16	FTO		\$519.36
8 x 12	26-150812	1	12	FTO		\$692.71
8 x 15	26-150815	1	30	FTO		\$1,057.14
8 x 18	26-150818	1	43	FTO		\$1,346.51
8 x 21	26-150821	1	77	FTO		\$1,806.57
8 x 24	26-150824	1	100	FTO		\$3,730.13
10 x 12	26-151012	1	16	FTO		\$802.93
10 x 15	26-151015	1	35	FTO		\$1,165.14
10 x 18	26-151018	1	49	FTO		\$1,365.49
10 x 21	26-151021	1	81	FTO		\$1,828.03
10 x 24	26-151024	1	112	FTO		\$3,817.21
12 x 15	26-151215	1	36	FTO		\$1,266.95
12 x 18	26-151218	1	51	FTO		\$1,384.74
12 x 21	26-151221	1	82	FTO		\$1,871.74
12 x 24	26-151224	1	113	FTO		\$3,866.73
15 x 18	26-151518	1	62	FTO		\$1,396.18
15 x 21	26-151521	1	92	FTO		\$1,943.89
15 x 24	26-151524	1	121	FTO		\$3,976.85
18 x 21	26-151821	1	108	FTO		\$2,107.77
18 x 24	26-151824	1	131	FTO		\$4,150.54
21 x 24	26-152124	1	147	FTO		\$4,878.42

### ECENTRIC INCREASER COUPLING

(G x G)



SIZE	PART NUMBER	CTN QTY	WT EACH	STYLE	CAT	LIST PRICE
4 x 6	26-140406	1	4.5	FTO		\$105.15
4 x 8	26-140408	1	10	FTO		\$201.24
4 x 10	26-140410	1	14	FTO		\$387.59
4 x 12	26-140412	1	20	FTO		\$586.37
4 x 15	26-140415	1	30	FTO		\$984.90
4 x 18	26-140418	1	45	FTO		\$1,331.10
4 x 21	26-140421	1	82	FTO		\$1,976.01
4 x 24	26-140424	1	125	FTO		\$4,118.06
6 x 8	26-140608	1	5.0	FTO		\$226.82
6 x 10	26-140610	1	14	FTO		\$458.91
6 x 12	26-140612	1	20	FTO		\$616.41
6 x 15	26-140615	1	31	FTO		\$999.26
6 x 18	26-140618	1	45	FTO		\$1,347.39
6 x 21	26-140621	1	88	FTO		\$1,996.53
6 x 24	26-140624	1	136	FTO		\$4,158.86
8 x 10	26-140810	1	8.2	FTO		\$532.35
8 x 12	26-140812	1	23	FTO		\$710.07
8 x 15	26-140815	1	34	FTO		\$1,083.61
8 x 18	26-140818	1	50	FTO		\$1,380.16
8 x 21	26-140821	1	84	FTO		\$2,024.86
8 x 24	26-140824	1	139	FTO		\$4,206.71
10 x 12	26-141012	1	13	FTO		\$823.01
10 x 15	26-141015	1	38	FTO		\$1,194.26
10 x 18	26-141018	1	53	FTO		\$1,399.64
10 x 21	26-141021	1	92	FTO		\$2,050.73
10 x 24	26-141024	1	130	FTO		\$4,228.29
12 x 15	26-141215	1	17	FTO		\$1,298.63
12 x 18	26-141218	1	52	FTO		\$1,419.35
12 x 21	26-141221	1	97	FTO		\$2,158.11
12 x 24	26-141224	1	133	FTO		\$4,359.69
15 x 18	26-141518	1	60	FTO		\$1,444.01
15 x 21	26-141521	1	102	FTO		\$2,492.83
15 x 24	26-141524	1	148	FTO		\$4,468.25
18 x 21	26-141821	1	114	FTO		\$2,685.93
18 x 24	26-141824	1	145	FTO		\$4,708.17
21 x 24	26-142124	1	178	FTO		\$5,106.87

#### STYLE LEGEND:

FTO	Fabricated To Order; Non-Returnable; Non-Cancelable; Non-Stock (2-4 day lead time)
-----	--

NOTE: Category column intentionally left blank

# HARCO PRICE LIST

## SDR-26 Gasketed Sewer Fittings

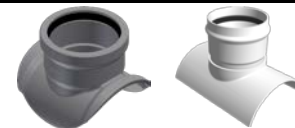
### SADDLE WYE



Includes 2 S.S. Straps

SIZE	PART NUMBER	CTN QTY	WT EACH	STYLE	CAT	LIST PRICE
8 x 4	26-550804	1	1.4	FBNS		\$169.92
8 x 6	26-550806	1	4.1	FBNS		\$155.98
10 x 4	26-551004	1	2.7	FBNS		\$183.68
10 x 6	26-551006	1	5.4	FBNS		\$197.12
10 x 8	26-551008	1	13	FBNS		\$559.56
12 x 4	26-551204	1	2.7	FBNS		\$204.71
12 x 6	26-551206	1	6.8	FBNS		\$229.91
12 x 8	26-551208	1	13	FBNS		\$782.02
12 x 10	26-551210	1	26	FBNS		\$943.87
15 x 4	26-551504	1	2.7	FBNS		\$418.35
15 x 6	26-551506	1	4.5	FBNS		\$477.22
15 x 8	26-551508	1	14	FBNS		\$964.08
15 x 10	26-551510	1	26	FBNS		\$1,078.67
15 x 12	26-551512	1	43	FBNS		\$1,321.40
18 x 4	26-551804	1	2.6	FBNS		\$572.24
18 x 6	26-551806	1	4.5	FBNS		\$630.55
18 x 8	26-551808	1	13	FBNS		\$1,071.94
18 x 10	26-551810	1	26	FBNS		\$1,213.49
18 x 12	26-551812	1	42	FBNS		\$1,516.92
18 x 15	26-551815	1	57	FBNS		\$1,894.43
21 x 4	26-552104	1	3.1	FBNS		\$603.85
21 x 6	26-552106	1	4.7	FBNS		\$650.77
21 x 8	26-552108	1	14	FBNS		\$1,179.82
21 x 10	26-552110	1	26	FBNS		\$1,456.22
21 x 12	26-552112	1	42	FBNS		\$1,820.27
21 x 15	26-552115	1	54	FBNS		\$2,723.66
21 x 18	26-552118	1	123	FBNS		\$4,085.51
24 x 4	26-552404	1	3	FBNS		\$634.05
24 x 6	26-552406	1	4.9	FBNS		\$683.31
24 x 8	26-552408	1	13	FBNS		\$1,238.81
24 x 10	26-552410	1	24	FBNS		\$1,484.33
24 x 12	26-552412	1	41	FBNS		\$2,218.03
24 x 15	26-552415	1	51	FBNS		\$3,330.41
24 x 18	26-552418	1	131	FBNS		\$4,503.48
24 x 21	26-552421	1	204	FBNS		\$6,748.46

### SADDLE TEE



Includes 2 S.S. Straps

SIZE	PART NUMBER	CTN QTY	WT EACH	STYLE	CAT	LIST PRICE
8 x 4	26-560804	1	2.7	FBNS		\$163.06
8 x 6	26-560806	1	4.1	FBNS		\$160.35
10 x 4	26-561004	1	2.7	FBNS		\$163.74
10 x 6	26-561006	1	4.1	FBNS		\$218.73
10 x 8	26-561008	1	12	FBNS		\$458.45
12 x 4	26-561204	1	2.7	FBNS		\$203.11
12 x 6	26-561206	1	4.1	FBNS		\$228.39
12 x 8	26-561208	1	11	FBNS		\$532.61
12 x 10	26-561210	1	19	FBNS		\$667.47
15 x 4	26-561504	1	2.0	FBNS		\$372.99
15 x 6	26-561506	1	3.5	FBNS		\$440.40
15 x 8	26-561508	1	12	FBNS		\$546.10
15 x 10	26-561510	1	19	FBNS		\$688.27
15 x 12	26-561512	1	31	FBNS		\$849.47
18 x 4	26-561804	1	2.0	FBNS		\$508.66
18 x 6	26-561806	1	3.4	FBNS		\$560.49
18 x 8	26-561808	1	12	FBNS		\$725.17
18 x 10	26-561810	1	18	FBNS		\$804.74
18 x 12	26-561812	1	30	FBNS		\$1,150.41
18 x 15	26-561815	1	41	FBNS		\$1,255.86
21 x 4	26-562104	1	2.3	FBNS		\$536.75
21 x 6	26-562106	1	3.8	FBNS		\$578.45
21 x 8	26-562108	1	12	FBNS		\$761.44
21 x 10	26-562110	1	18	FBNS		\$844.97
21 x 12	26-562112	1	31	FBNS		\$1,207.92
21 x 15	26-562115	1	42	FBNS		\$1,318.66
21 x 18	26-562118	1	85	FBNS		\$1,864.35
24 x 4	26-562404	1	2.4	FBNS		\$563.58
24 x 6	26-562406	1	3.8	FBNS		\$613.08
24 x 8	26-562408	1	12	FBNS		\$799.51
24 x 10	26-562410	1	19	FBNS		\$887.22
24 x 12	26-562412	1	28	FBNS		\$1,268.33
24 x 15	26-562415	1	41	FBNS		\$1,384.60
24 x 18	26-562418	1	77	FBNS		\$1,959.50
24 x 21	26-562421	1	123	FBNS		\$2,206.07

#### STYLE LEGEND:


FBNS


Fabricated To Order; Gasket Branch and Solvent Weld Skirt; Non-Returnable; Non-Cancelable; Non-Stock (2-4 day lead time)


NOTE: Category column intentionally left blank


## HARCO PRICE LIST


### SDR-26 Gasketed Sewer Fittings


<b>DEEP SOCKET COUPLING</b>						
						
(Deep Socket G x G)						
SIZE	PART NUMBER	CTN QTY	WT EACH	STYLE	CAT	LIST PRICE
4	26-9004	1	2.8	FTO		\$202.23
6	26-9006	1	6.3	FTO		\$258.28


<b>DEEP SOCKET COUPLING</b>						
						
(Deep Socket G x S)						
SIZE	PART NUMBER	CTN QTY	WT EACH	STYLE	CAT	LIST PRICE
4	26-9104	1	2.8	FTO		\$184.47
6	26-9106	1	6.3	FTO		\$250.59


<b>90° DEEP SOCKET BEND</b>						
						
(Deep Socket G x G)						
SIZE	PART NUMBER	CTN QTY	WT EACH	STYLE	CAT	LIST PRICE
4	26-9804	1	4.2	FTO		\$338.62
6	26-9806	1	9.6	FTO		\$377.10

<b>90° DEEP SOCKET BEND</b>						
						
(Deep Socket G x S)						
SIZE	PART NUMBER	CTN QTY	WT EACH	STYLE	CAT	LIST PRICE
4	26-9904	1	4.2	FTO		\$338.62
6	26-9906	1	9.6	FTO		\$377.10

<b>45° DEEP SOCKET BEND</b>						
						
(Deep Socket G x G)						
SIZE	PART NUMBER	CTN QTY	WT EACH	STYLE	CAT	LIST PRICE
4	26-9204	1	3.0	FTO		\$184.55
6	26-9206	1	6.6	FTO		\$191.17

<b>45° DEEP SOCKET BEND</b>						
						
(Deep Socket G x S)						
SIZE	PART NUMBER	CTN QTY	WT EACH	STYLE	CAT	LIST PRICE
4	26-9304	1	3.0	FTO		\$184.55
6	26-9306	1	6.6	FTO		\$182.06

<b>22½° DEEP SOCKET BEND</b>						
						
(Deep Socket G x G)						
SIZE	PART NUMBER	CTN QTY	WT EACH	STYLE	CAT	LIST PRICE
4	26-9604	1	3.0	FTO		\$184.55
6	26-9606	1	6.6	FTO		\$191.17

<b>22½° DEEP SOCKET BEND</b>						
						
(Deep Socket G x S)						
SIZE	PART NUMBER	CTN QTY	WT EACH	STYLE	CAT	LIST PRICE
4	26-9704	1	3.0	FTO		\$184.55
6	26-9706	1	6.6	FTO		\$191.17

<b>STYLE LEGEND:</b>	
FTO	Fabricated To Order; Non-Returnable; Non-Cancelable; Non-Stock (2-4 day lead time)

NOTE: Category column intentionally left blank