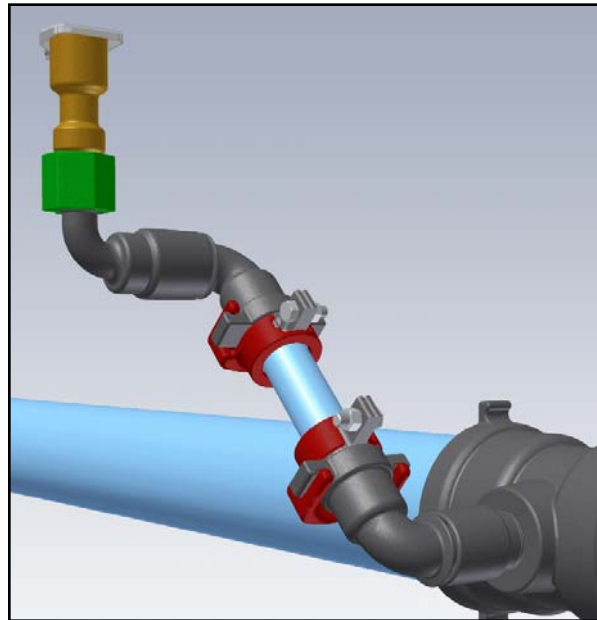


FITTINGS

DUCTILE IRON SWING JOINT



**DUCTILE
IRON**

*Ductile Iron
Components*

*Adjustable
Length*

*Quick
Coupler
Locks in
Place*

*1" MIPT
Outlet and
1½" and 2"
Inlets*

Engineered for Durability

The HARCO Ductile Iron Swing Joint is useful for heavy duty applications like quick coupler valves – situations where a plastic swing joint doesn't have the required reliability.

Based on the HARCO Swivel Joint and Knuckle Restraint systems, the Ductile Iron Swing Joint is installed and works like plastic swing joints. The key fitting components are ductile iron. The riser section is 1½" PVC pipe supplied by the user and restrained with HARCO

1½" Knuckle Joint Restraints. The riser section can be any length required by the situation.

The system is currently available with a 1" MIPT outlet. Inlets are available in 2" MIPT, 1½" MIPT, 1", 1½" FIPT, and 1½" Restrained Gasket Bell. It comes standard with a Locking Sleeve that can prevent disconnection of the quick coupler in service and is compatible with the HARCO Quick Coupler Anchor.



HARRINGTON CORPORATION • P.O. BOX 10335 • LYNCHBURG, VIRGINIA 24506

PHONE: 434-845-7094 • FAX: 434-845-8562 • E-MAIL: sales@harcofittings.com • WEB: www.harcofittings.com

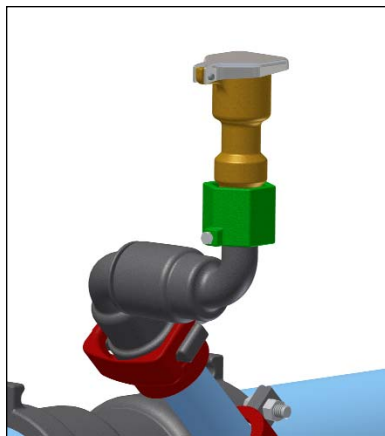
PF118-021108

Ductile Iron Swing Joint

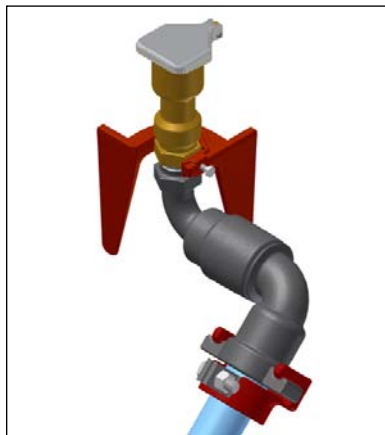
Product Sheet

DUCTILE IRON SWING JOINT

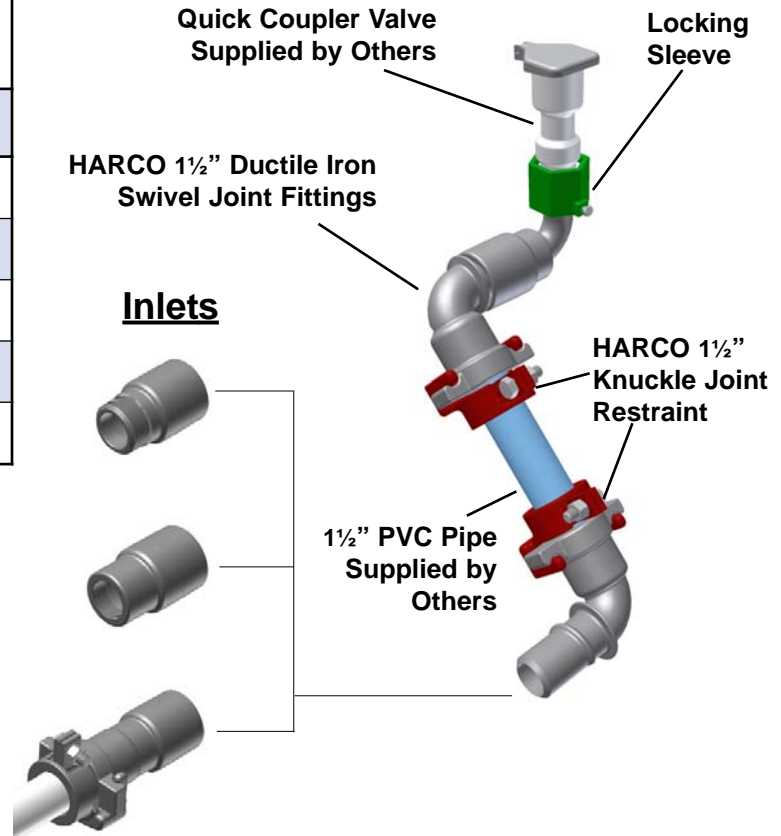
SIZE INLET x OUTLET	PART NUMBER	WEIGHT
1 Female NPT x 1 Male NPT	878-10-10	18
1½ Male NPT x 1 Male NPT	877-15-10	19
1½ Female NPT x 1 Male NPT	878-15-10	17
1½ Restrained Gasket x 1 Male NPT	879-15-10	21
2 Male NPT x 1 Male NPT	877-20-10	17



*Standard
with Quick
Coupler
Locking
Sleeve*



*Alternate
Quick
Coupler
Anchor*



Suggested Specifications

Ductile Iron Swing Joint components shall be made of Ductile Iron per ASTM A-536. Gaskets shall meet the requirements of ASTM F-477. Swivel joints shall be *as cast*, permitting free rotation. Joint restraints for 1½" PVC IPS riser pipe shall have machined serrations and shall be actuated with one bolt. Swing Joints shall be Ductile Iron Swing Joints as manufactured by The Harrington Corporation of Lynchburg, VA.



HARRINGTON CORPORATION • P.O. BOX 10335 • LYNCHBURG, VIRGINIA 24506

PHONE: 434-845-7094 • FAX: 434-845-8562 • E-MAIL: sales@harcofittings.com • WEB: www.harcofittings.com

PF118-021108